



Organizational Structure

WellCare Health Plans, Inc. (**WellCare**), is a Delaware corporation whose common stock is traded on the New York Stock Exchange under the symbol “WCG”. The following pages provide additional details regarding WellCare and its subsidiaries. Please visit us at www.wellcare.com for additional information.

Throughout this document a line from one entity leading down to another indicates 100% ownership unless noted.

Higher Level Holding Company Structure



In addition to the above, WellCare Health Plans, Inc., is the sole member of the following not-for-profit corporations

:

Not-for-profit corporation	Type of entity	Date formed
The WellCare Community Foundation	DE corp.	12/9/2010
WellCare Associate Assistance Fund, Inc.	FL corp.	2/27/2018

WellCare Health Plans, Inc.

Organizational Structure

Exhibit A (Subsidiaries of The WellCare Management Group, Inc.)

In the *Type of entity* column of the table below, “LLC” means “limited liability company” and “corp” means “corporation”. For example, America's 1st Choice California Holdings, LLC is a Florida limited liability company and Easy Choice Health Plan, Inc. is a California corporation.

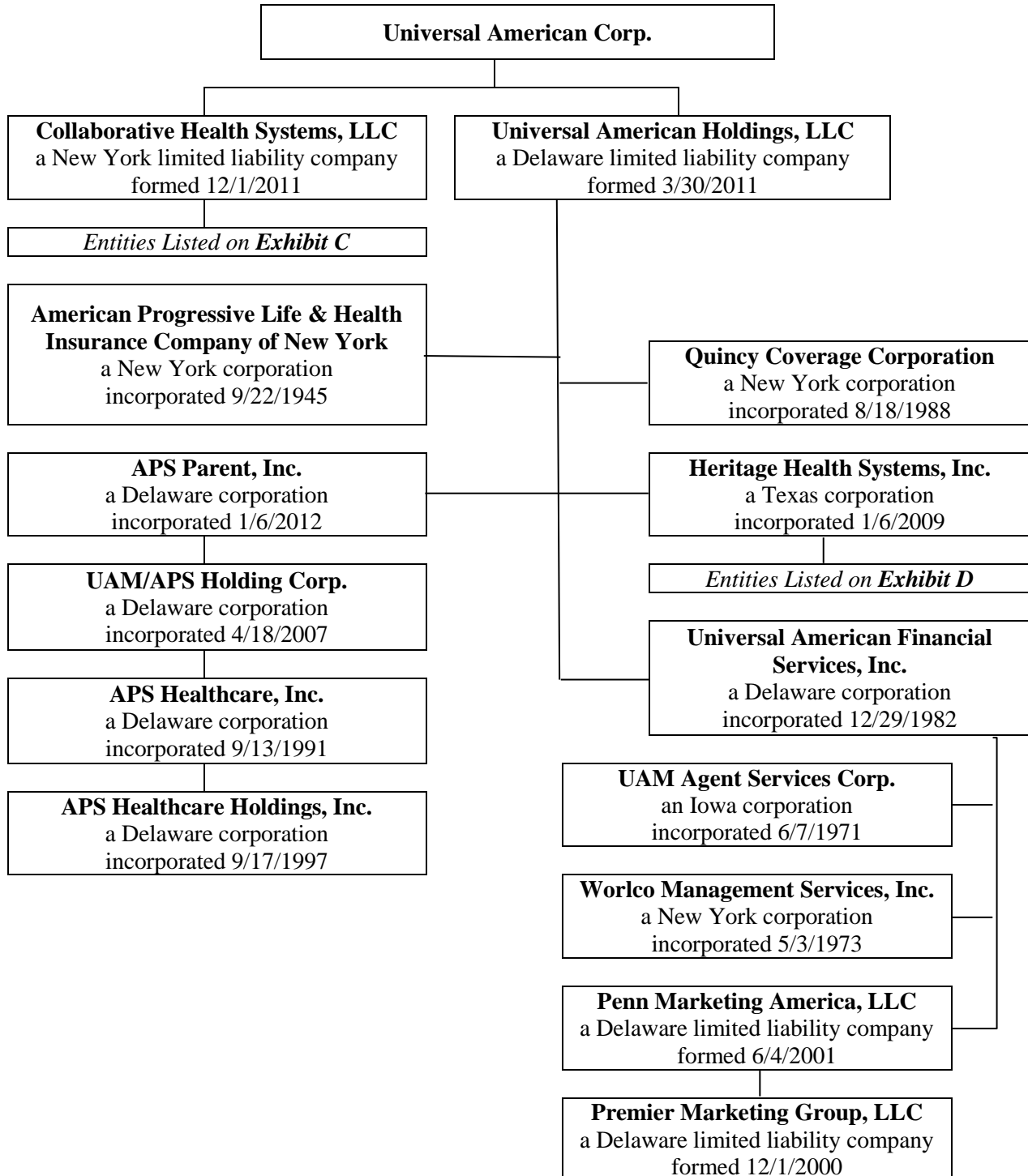
Subsidiaries of The WellCare Management Group, Inc.	Type of entity	Date formed
America's 1st Choice California Holdings, LLC → owns 100% of <i>Easy Choice Health Plan, Inc.</i>	FL LLC CA corp.	3/24/2011 7/27/2006
Care 1st Health Plan Arizona, Inc. → owns 100% of <i>Care 1st Health Plan Administrative Services, Inc.</i>	AZ corp. AZ. corp	1/8/2003 4/17/2013
Comprehensive Health Management, Inc.	FL corp.	12/22/1998
Comprehensive Reinsurance, Ltd.	Cayman Islands corp.	12/17/2004
Harmony Behavioral Health, Inc. → owns 100% of <i>Harmony Behavioral Health IPA, Inc.</i>	FL corp. NY corp.	8/10/2005 7/29/2005
Harmony Health Systems, Inc. → owns 100% of <i>Harmony Health Management, Inc. and</i> → owns 100% of <i>Harmony Health Plan, Inc. (also d/b/a WellCare)</i>	NJ corp. NJ corp. IL corp.	8/9/1995 9/7/2001 8/28/1995
Missouri Care, Incorporated	MO corp.	7/27/2006
'Ohana Health Plan, Inc.	HI corp/	5/21/2009
One Care by Care1st Health Plan of Arizona, Inc.	AZ corp.	3/10/2005
Universal American Corp. → See Exhibit B for subsidiaries of <i>Universal American Corp.</i>	DE corp.	12/22/2010
WellCare Health Insurance Company of America	AR corp.	1/23/2018
WellCare Health Insurance Company of Kentucky, Inc. (d/b/a WellCare of Kentucky, Inc.)	KY corp.	3/27/1962
WellCare Health Insurance of Arizona, Inc. (also d/b/a 'Ohana Health Plan, Inc.)	AZ corp.	11/15/1972
WellCare Health Insurance of New York, Inc.	NY corp.	4/6/1993
WellCare Health Plans of Arizona, Inc.	AZ corp.	10/12/2017
WellCare Health Plans of California, Inc.	CA corp.	12/15/2010
WellCare Health Plans of Kentucky, Inc.	KY corp.	5/28/2014
WellCare Health Plans of New Jersey, Inc.	NJ corp.	12/8/2006
WellCare Health Plans of Tennessee, Inc.	TN corp.	4/25/2012
WellCare National Health Insurance Company	TX corp.	4/6/2018
WellCare of Alabama, Inc.	AL corp.	4/7/2017
WellCare of Florida, Inc. (also d/b/a Staywell Health Plan of Florida)	FL corp.	5/7/1985
WellCare of Georgia, Inc.	GA corp.	12/13/2004
WellCare of Kansas, Inc.	KS corp.	10/13/2011

Subsidiaries of The WellCare Management Group, Inc.	Type of entity	Date formed
WellCare of Maine, Inc.	ME corp.	10/16/2017
WellCare of Mississippi, Inc.	MS corp.	2/21/2017
WellCare of Nebraska, Inc.	NE corp.	10/20/2015
WellCare of New Mexico, Inc.	NM corp.	8/14/2017
WellCare of New York, Inc. → owns 100% of <i>WellCare of Connecticut, Inc.</i>	NY corp. CT corp.	12/26/1985 4/8/1994
WellCare of North Carolina, Inc.	NC corp.	5/8/2018
WellCare of Ohio, Inc.	OH corp.	9/27/2005
WellCare of Oklahoma, Inc.	OK corp.	7/13/2016
WellCare of Pennsylvania, Inc.	PA corp.	2/24/2016
WellCare of Puerto Rico, Inc.	PR corp.	11/15/2017
WellCare of South Carolina, Inc.	SC corp.	11/8/2002
WellCare of Texas, Inc.	TX corp.	12/8/2006
WellCare of Virginia, Inc.	VA corp.	2/24/2017
WellCare Pharmacy Benefits Management, Inc. → owns 100% of <i>Exactus Pharmacy Solutions, Inc.</i>	DE corp. DE corp.	5/10/2006 1/24/2007
WellCare Prescription Insurance, Inc.	FL corp.	3/24/2005
Windsor Health Group, Inc. → owns 100% of <i>Windsor Management Services, Inc.</i>	TN corp. TN corp.	9/18/2000 5/4/1993

WellCare Health Plans, Inc.

Organizational Structure

Exhibit B (Subsidiaries of Universal American Corp.)



WellCare Health Plans, Inc.

Organizational Structure

Exhibit C (Subsidiaries of Collaborative Health Systems, LLC. (CHS))

In the *Type of entity* column of the table below, “LLC” means “limited liability company” and “corp” means “corporation”. For example, Accountable Care Coalition of Central Georgia, LLC is a Georgia limited liability company and Accountable Care Coalition of Texas, Inc. is a Texas corporation.

Subsidiaries of CHS	% owned by CHS	Type of entity	Date formed
Accountable Care Coalition of Arizona, LLC	100%	AZ LLC	4/20/2017
Accountable Care Coalition of Central Georgia, LLC	51%	GA LLC	6/6/2012
Accountable Care Coalition of Chesapeake, LLC	100%	MD LLC	5/10/2016
Accountable Care Coalition of Coastal Georgia, LLC	51%	GA LLC	12/22/2011
Accountable Care Coalition of Community Health Centers, LLC	100%	TX LLC	5/25/2017
Accountable Care Coalition of Community Health Centers II, LLC	100%	TX LLC	5/24/2017
Accountable Care Coalition of DeKalb, LLC	80%	GA LLC	2/13/2012
Accountable Care Coalition of Georgia, LLC	51%	GA LLC	6/6/2012
Accountable Care Coalition of Hawaii, LLC	100%	HI LLC	5/17/2017
Accountable Care Coalition of Louisiana, LLC	100%	LA LLC	5/24/2017
Accountable Care Coalition of Maryland, LLC	51%	MD LLC	12/27/2011
Accountable Care Coalition of Maryland Primary Care, LLC	51%	MD LLC	6/4/2012
Accountable Care Coalition of Mississippi, LLC	51%	MS LLC	5/24/2013
Accountable Care Coalition of Mount Kisco, LLC	51%	NY LLC	12/22/2011
Accountable Care Coalition of New Jersey, LLC	100%	NJ LLC	4/21/2017
Accountable Care Coalition of Northeast Georgia, LLC	51%	GA LLC	4/8/2015
Accountable Care Coalition of North Texas, LLC	51%	TX LLC	2/16/2012
Accountable Care Coalition of Northwest Florida, LLC	51%	FL LLC	12/22/2011
Accountable Care Coalition of Pennsylvania, LLC	100%	PA LLC	5/18/2017
Accountable Care Coalition of South Carolina, LLC	100%	SC LLC	5/5/2015
Accountable Care Coalition of Southeast Partners, LLC	100%	GA LLC	5/22/2017
Accountable Care Coalition of Southeast Wisconsin, LLC	51%	WI LLC	12/22/2011
Accountable Care Coalition of Syracuse, LLC	51%	NY LLC	2/13/2012
Accountable Care Coalition of Tennessee, LLC	100%	TN LLC	4/18/2017
Accountable Care Coalition of the North West Region, LLC	100%	OR LLC	5/19/2017
Accountable Care Coalition of the Northwest Region II, LLC	100%	OR LLC	5/24/2017
Accountable Care Coalition of the Tri-Counties, LLC	51%	SC LLC	1/4/2012
Accountable Care Coalition of Western Georgia, LLC	51%	GA LLC	2/9/2012
AWC of Syracuse, Inc.	100%	NY corp	11/6/2014
Chrysalis Medical Services, LLC	51%	NJ LLC	12/11/2013

Subsidiaries of CHS	% owned by CHS	Type of entity	Date formed
Collaborative Health Systems of Maryland, LLC	100%	MD LLC	7/21/2016
Collaborative Health Systems of Virginia, LLC	100%	VA LLC	7/21/2016
Essential Care Partners, LLC	51%	TX LLC	2/17/2012
Hudson Accountable Care, LLC	100%	NY LLC	5/6/2015
Maine Primary Care Holdings, LLC	97%	ME LLC	2/14/2012
→ <i>owns 49.47% of Maine Community Accountable Care Organization, LLC</i>		ME LLC	2/14/2012
Maryland Collaborative Care, LLC	51%	MD LLC	6/4/2012
Mid-Atlantic Collaborative Care, LLC	51%	MD LLC	5/20/2016
Northern Maryland Collaborative Care, LLC	51%	MD LLC	6/14/2012
Virginia Collaborative Care, LLC	51%	VA LLC	6/4/2012

In addition to the above, Collaborative Health Systems, LLC is the sole member of the following not-for-profit corporations:

Not-for-profit corporation	Type of entity	Date formed
Accountable Care Coalition of Southeast Texas, LLC	TX corp.	4/28/2015
Accountable Care Coalition of Texas, Inc.	TX corp.	6/28/2011

WellCare Health Plans, Inc.

Organizational Structure

Exhibit D (Subsidiaries of Heritage Health Systems, Inc.)

In the *Type of entity* column of the table below, “corp” means “corporation” and “LP” means “limited partnership”. For example, Heritage Health Systems of Texas, Inc. is a Texas corporation and HHS Texas Management, LP is a Georgia limited partnership.

Subsidiaries of Heritage Health Systems, Inc.	Type of entity	Date formed
Heritage Health Systems of Texas, Inc.	TX corp.	9/16/2014
HHS Texas Management, Inc. → owns 99% of <i>HHS Texas Management, LP*</i>	GA corp. GA LP	5/1/1996 5/1/1996
SelectCare Health Plans, Inc.	TX corp.	3/15/2005
SelectCare of Texas, Inc.	TX corp.	5/30/2000

* The remaining 1% is owned by *Heritage Health Systems of Texas, Inc.*

In addition to the above, *Heritage Health Systems, Inc.* and its subsidiaries control the following not-for-profit corporations:

Not-for-profit corporation	Type of entity	Date formed
Golden Triangle Physician Alliance → <i>Heritage Health Systems of Texas, Inc.</i> is the sole member	TX corp.	7/22/1996
Heritage Physician Networks → <i>Heritage Health Systems, Inc.</i> is the sole member	TX corp.	9/5/1997